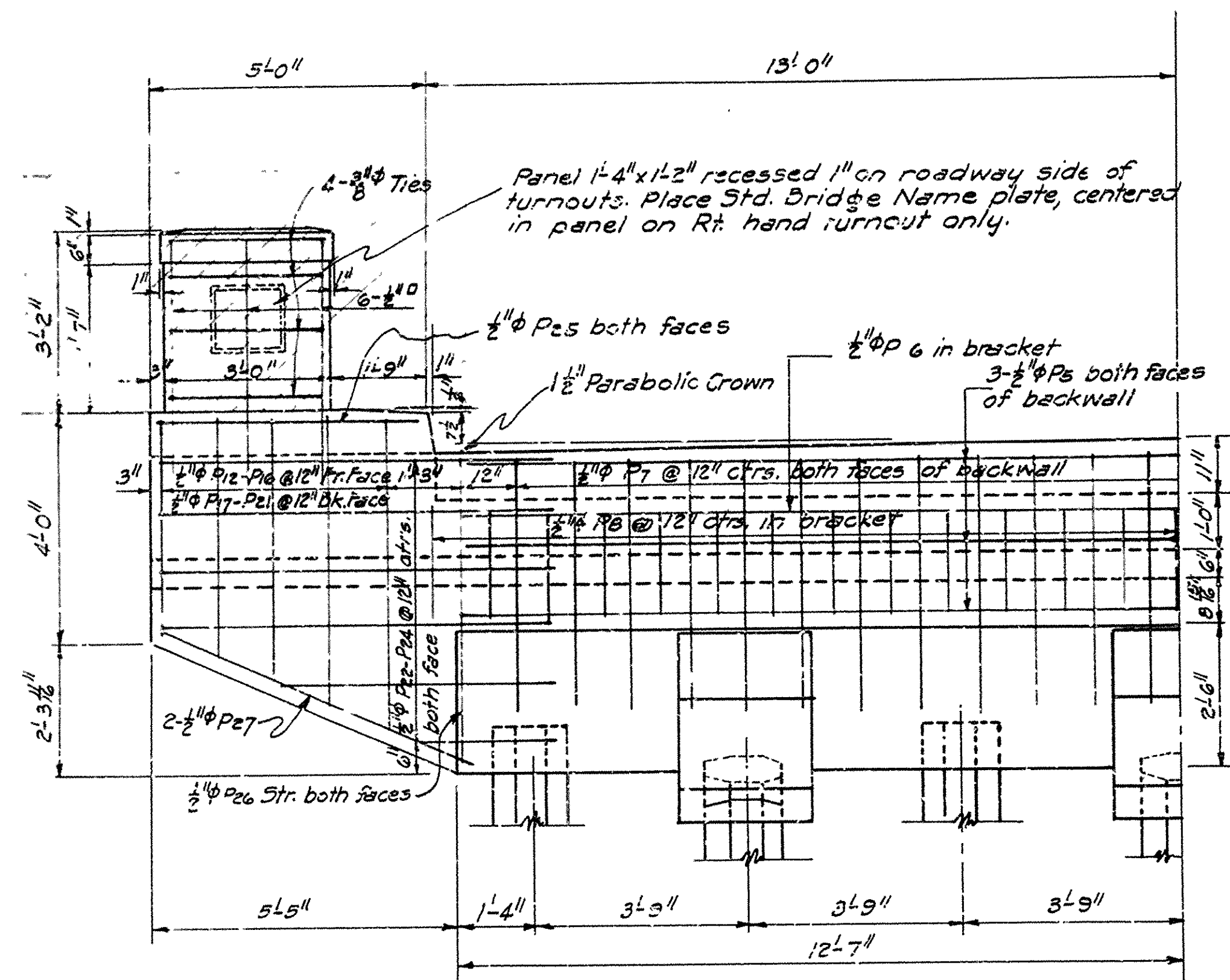
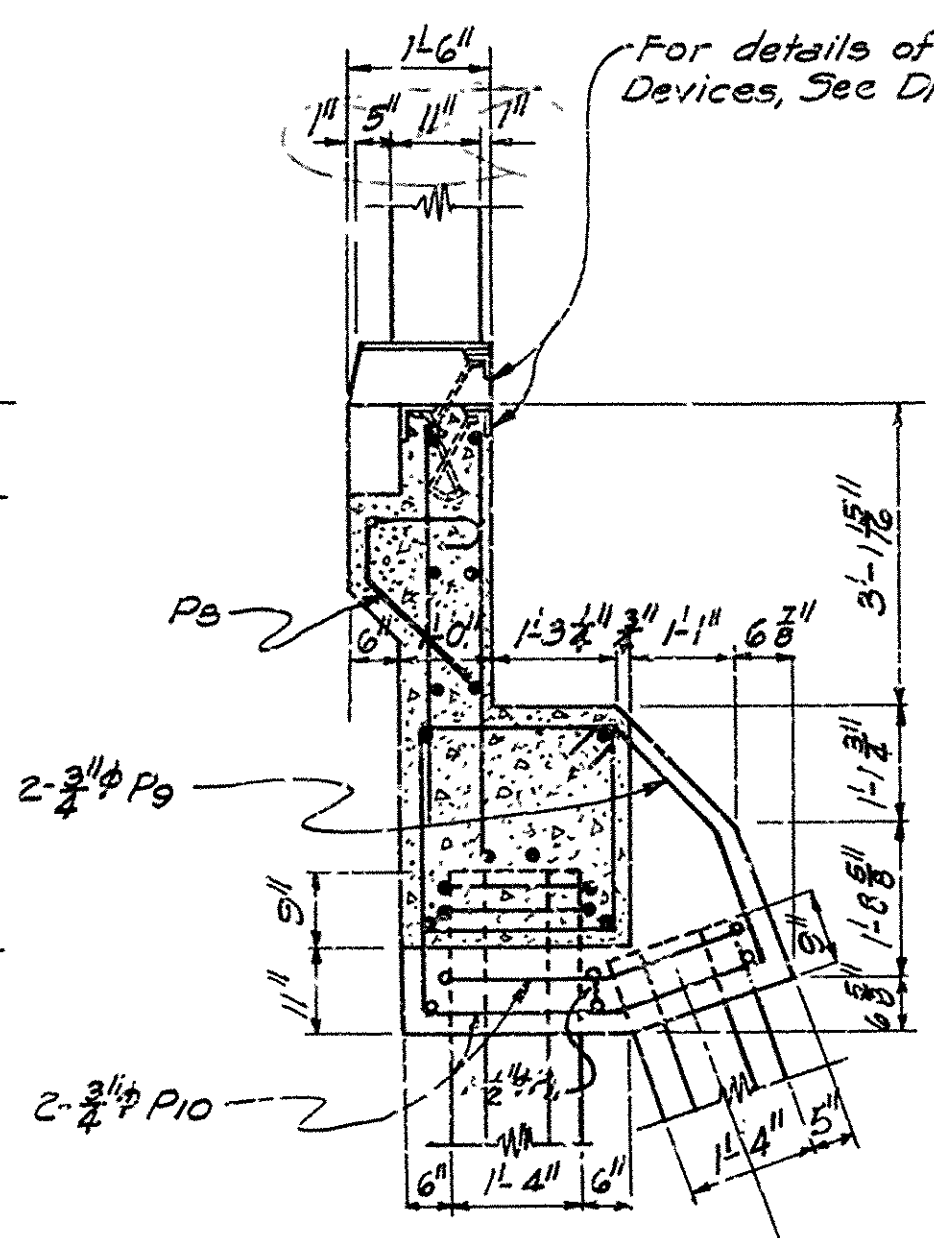


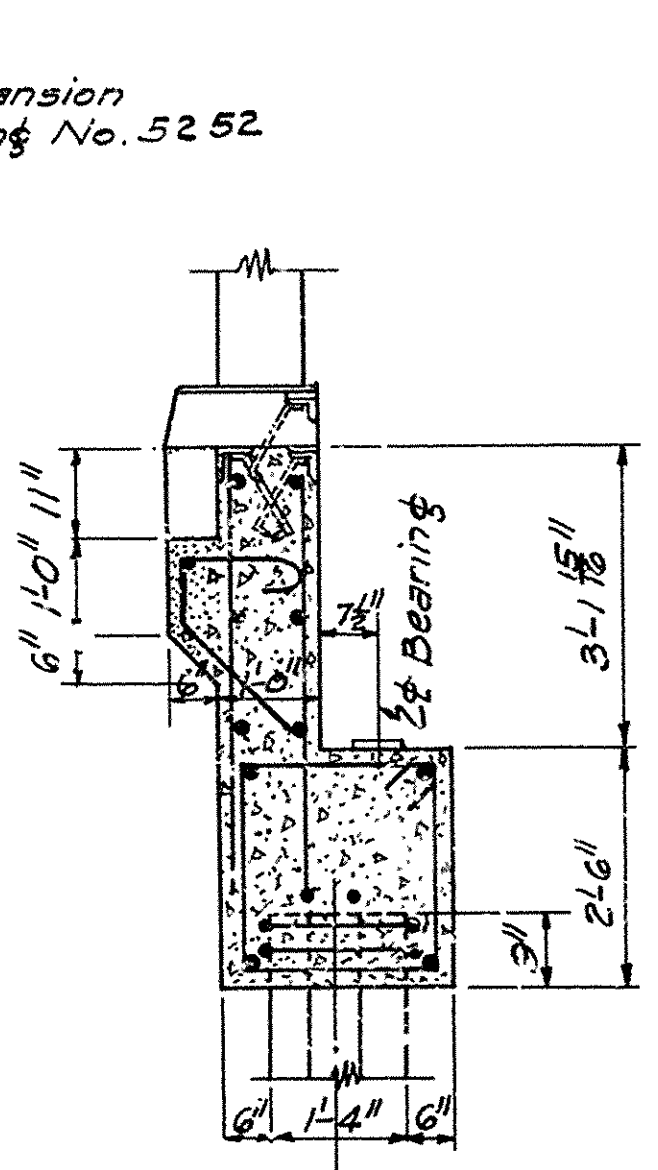
FED. ROAD DIST. NO.	STATE	PROJECT NO.	FISCAL YEAR	SHEET NO.	TOTAL SHEETS
6	ARK.				
STATE JC. NO.					



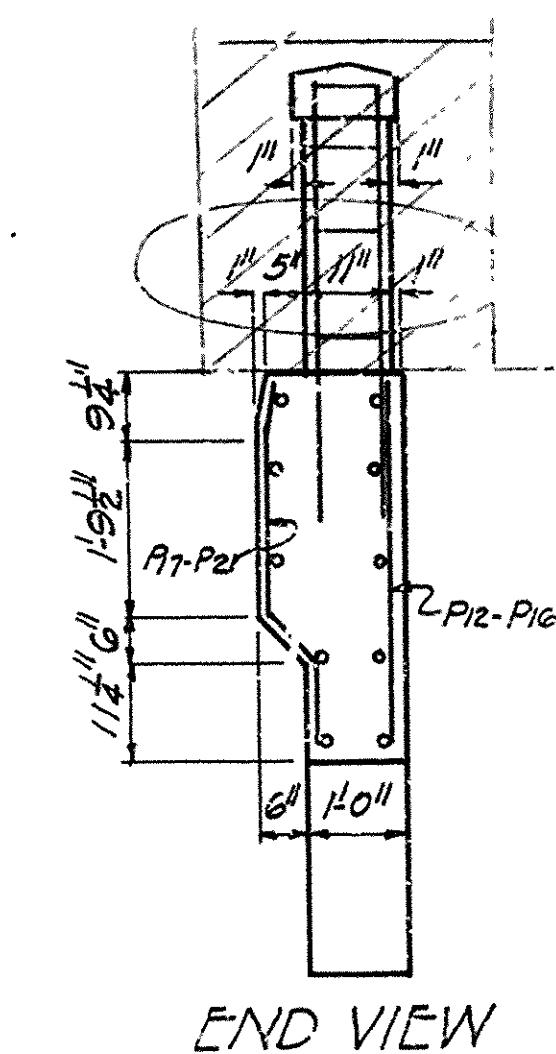
HALF FRONT ELEVATION END BENT
Cap Reinforcing same as shown for intermediate Bent



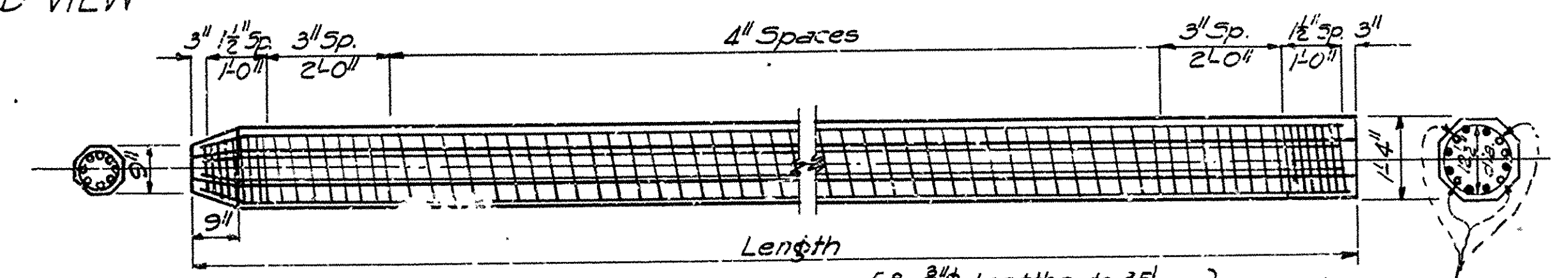
SECTION AT BATTER PILE



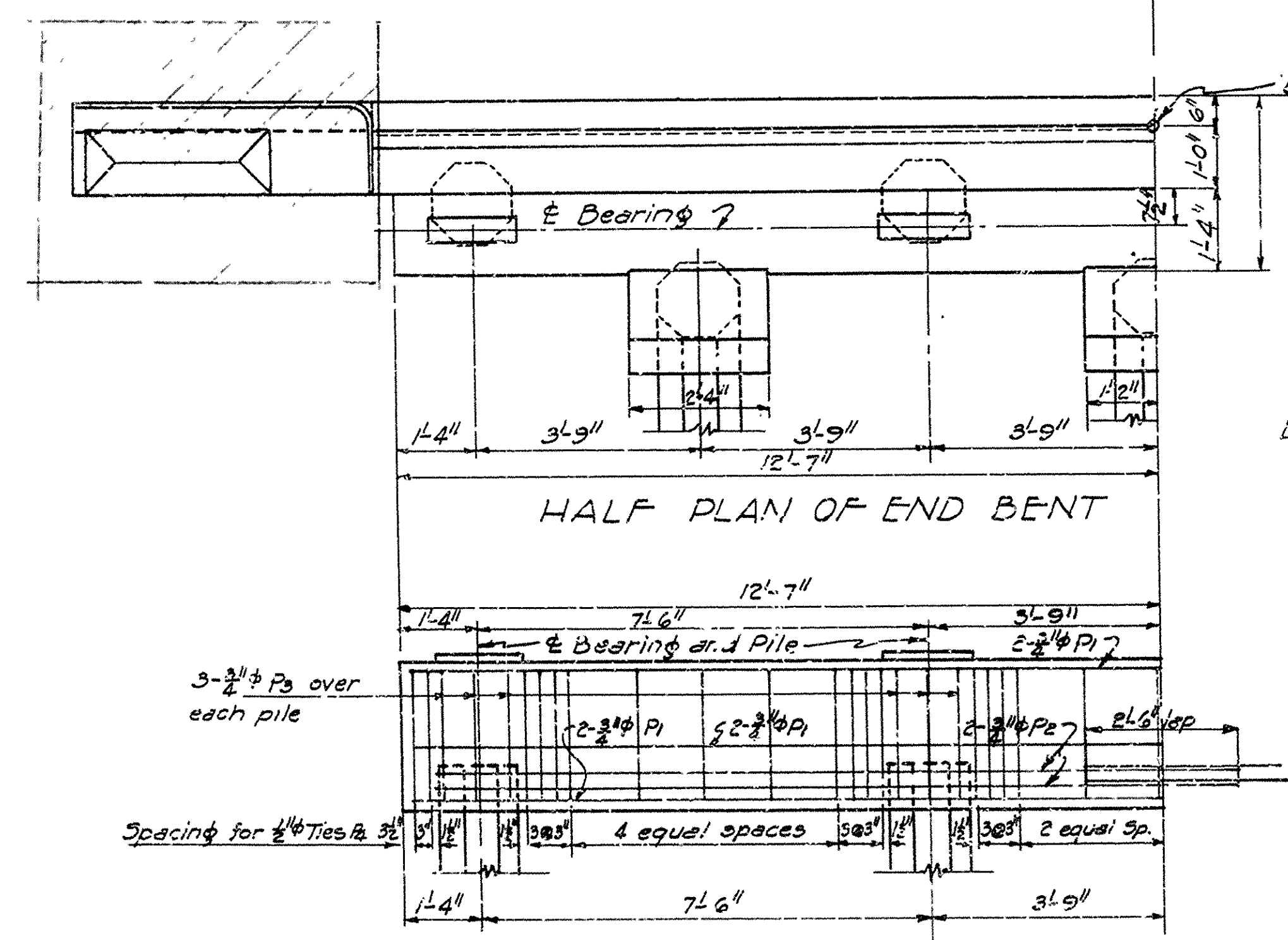
SECTION BETWEEN BATTER PILES



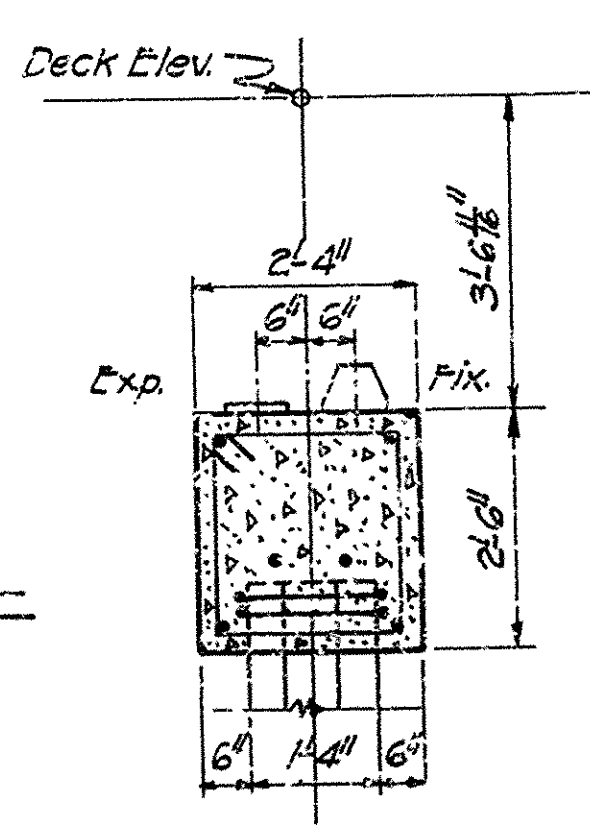
END VIEW



DETAILS OF 16" PRECAST CONCRETE PILE



HALF PLAN OF END BENT



SECTION ON C

HALF ELEVATION INTERMEDIATE BENT

Maximum Bearing Piles = 31 Tons per Pile

GENERAL NOTES:

Piles to be driven to a minimum capacity of 32 Tons.
For additional general notes, See Drwg. No. 5252

LIST OF BENT BARS

Mark	Size	Length	A	B	C	D	Diagram
P2	3/4"	28'-2"	1'-5"	10'-4"			
P3	3/4"	6'-1"	1'-11"	2'-11"			
P4	1/2"	8'-9"	1'-11"	2'-11"			
P11	1/2"	5'-5"	5"	1'-11"			
P8	1/2"	3'-9"	1'-0"	9"	1'-6"		
P9	3/4"	8'-0"	3'-0"	1'-11"	1'-6"	1'-7"	
P10	3/4"	11'-3"	1'-9"	1'-8"	3'-5"	1'-0"	
P17	1/4"	3'-11"	1'-11"				
P18	1/2"	4'-4"	1'-4"				
P19	1/2"	4'-9"	1'-9"				
P20	1/2"	5'-2"	2'-2"				
P21	1/2"	5'-7"	2'-7"				

REVISED 10-1-48 Oak Header Out
REVISED 8-25-42 Turnout
See Drwg. 5252-C for Std. Pile 30'-0" I Beam Spans
See Drwg. 5252-B for 1'-8" Walkways

DETAILS OF
STANDARD P.C. PILE BENTS
30'-0" I BEAM SPANS
26'-0" CLEAR ROADWAY 1'-8" WALKWAYS
ROUTE SEC.

ARKANSAS STATE HIGHWAY COMMISSION
LITTLE ROCK, ARK.

Drawn By: L.A.M.E. Date: 1-21-44
Traced By: L.A.M.E. Date: 1-25-44
Checked By: _____ Date: _____
BRIDGE NO. _____ DRAWING NO. 5252-4

M.C. Barber
PRINCIPAL HIGHWAY ENGINEER (BRIDGES)